

# DURABLE. RELIABLE. DEPENDABLE.



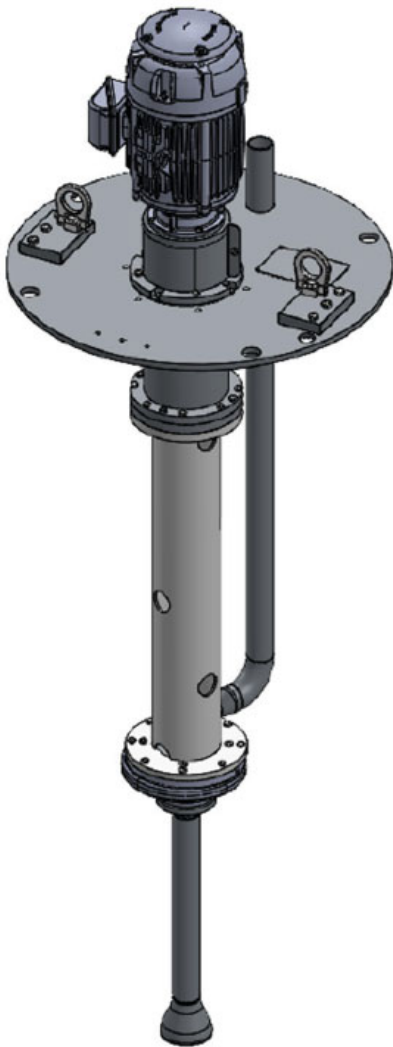
## HEAVY-DUTY BASE MOUNTED CANTILEVERED SHAFT SLURRY PUMP

**CLGT  
SERIES**

## SPECIFICATIONS

### FEATURES

- Heavy duty closed impeller for pumping low-solids slurry and sludge.
- Constructed of all 304L Stainless Steel for corrosion resistance.
- P-face inverter-duty TEFC, IEEE-841, low voltage motor minimizes the cost of operation.
- Bearings located above liquid level, avoiding the need for a mechanical seal.
- Maximum material thickness of liquid end parts for extended service life.



### SPECIFICATIONS

**Horsepower**

**Discharge Size**

**Performance Range**

Capacity  
Head

**Max Particle Size**

**Motor Nomenclature**

Type / Speed / HZ

Voltage / Phase

Service Factor

Insulation

**Maximum Fluid Temperature**

**Operation Mode**

**Materials of Construction**

Casing

Impeller

Wear Plate

Shaft

Bearing Housing

Casing Wear Rings

Fasteners

Piping

**Impeller Type**

**Elastomers**

O-Rings

Seals

**Gaskets:**

**Coupling:**

**Bearings**

Thrust

Radial

**Lubrication**

25 HP

1.5" Casing Discharge Flange  
3" Discharge Pipe

50 - 200 US GPM  
130' - 175' TH  
3/8"

P-Face TEFC / 900 to 1800

RPM / 60 HZ

460 V / 3 Phase

1.15

Class H

180° F

Synchronous Speed or V.F.D.

ASTM A743 304L SS

ASTM A743 304L SS

ASTM A240 304L SS

ASTM A276 304L SS

ASTM A276 304L SS

Stellite 6B

ASTM A193 B8M 316 SS

ASTM A312 304L SS

Closed

EPDM

Nitrile

Flexitallic CGI 304L SS

Rexnord Thomas Flexible Disk

Double Angular Contact

Deep Groove Ball Bearing

Permanently Lubricated with

Mobil Polyrex EM Grease

## ORDER DETAILS:

**Model: CLGT1.5C25-4T4-12.3-SS**

**Part Number: G51670**



**Recommended Spare Parts:**

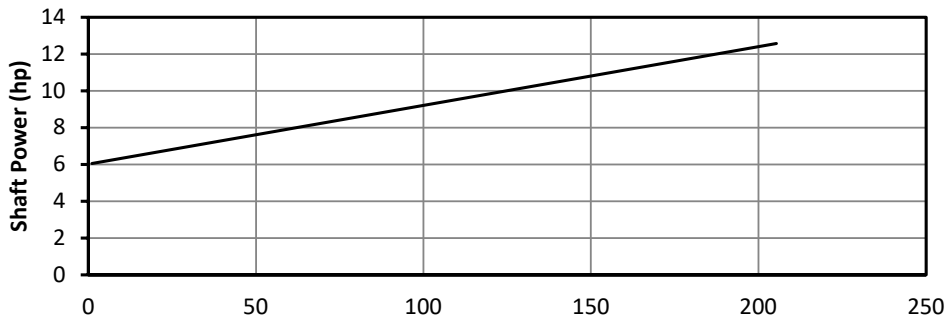
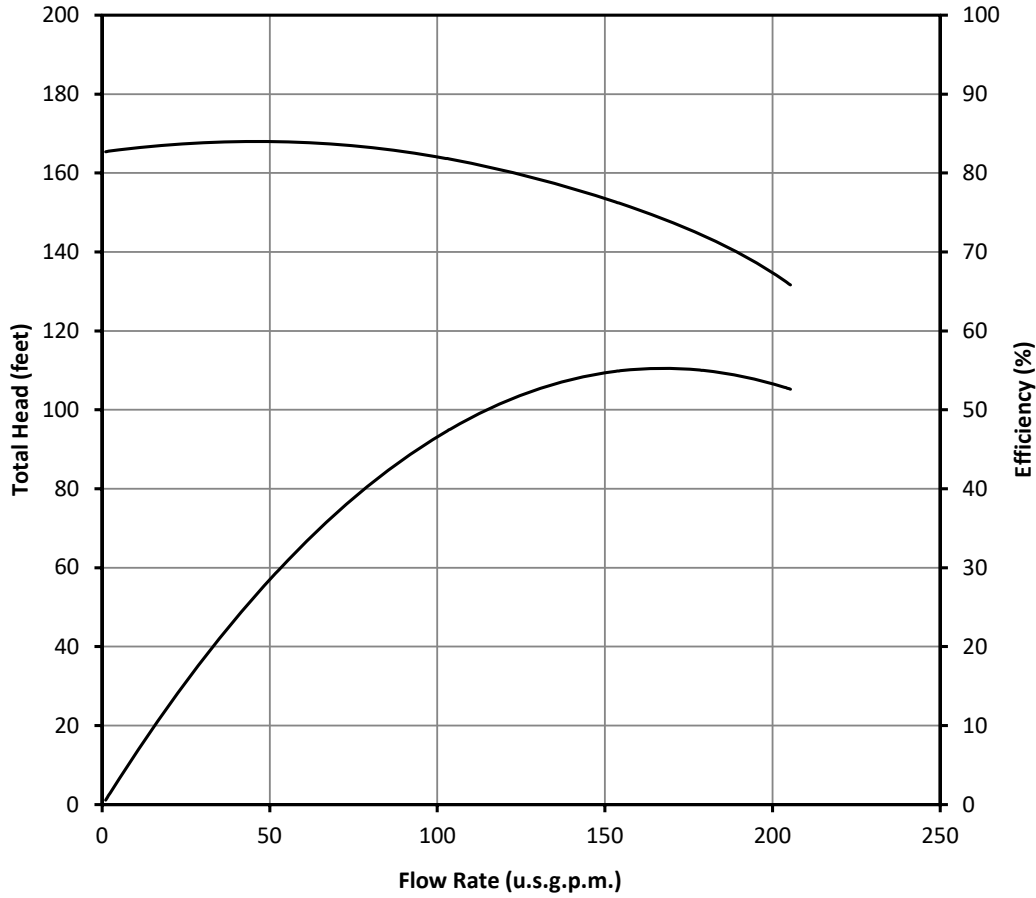
<b>Spare Parts List – Vertical Cantilever Pump</b>		
SN5885, SN5886		
<b>Qty</b>	<b>Part Number</b>	<b>Item Name</b>
1	KIT53707	Kit, O-Rings
1	KIT53704	Kit, Oil Seals
1	G53222	Gasket, Discharge Flange
1	G53223	Gasket, Suction Flange
1	G10259	Radial Bearing
2	G10294	Thrust Bearing
1	G11149	Thrust Bearing Nut
1	G11156	Thrust Bearing Washer
1	KIT53723	Kit, Motor End Fasteners/Shims
1	KIT53724	Kit, Lower End Fasteners/Shims
1	G53216	Coupling
1	G52140	Motor
1	G53411	Impeller Bolt Cover
1	G53175	Impeller with Wear Rings
1	G53696	Impeller Drive Side Wear Ring
1	G53697	Impeller Suction Side Wear Ring
1	G53196	Casing with Wear Ring
1	G53700	Casing Wear Ring
1	G53214	Drive Side Wear Plate with Wear Ring
1	G53701	Drive Side Wear Plate Wear Ring



**Vertical (CLGT1.5) Series**  
Heavy Duty Cantilever Pump

**CERTIFIED PERFORMANCE**  
CURVE

CURVE NUMBER	AGITATION SYSTEM	DISCHARGE	R.P.M.	CONSTRUCTION
CLGT1.5C25-4T4-12.3-SS SN5885	N/A	1.5"	1800	304L SS
PUMP TYPE	IMPELLER DIAMETER	SUCTION	LIQUID	MAX. SOLIDS
HPT/FPT Cantilever Pump	11.9"	3"	Water	3/8"

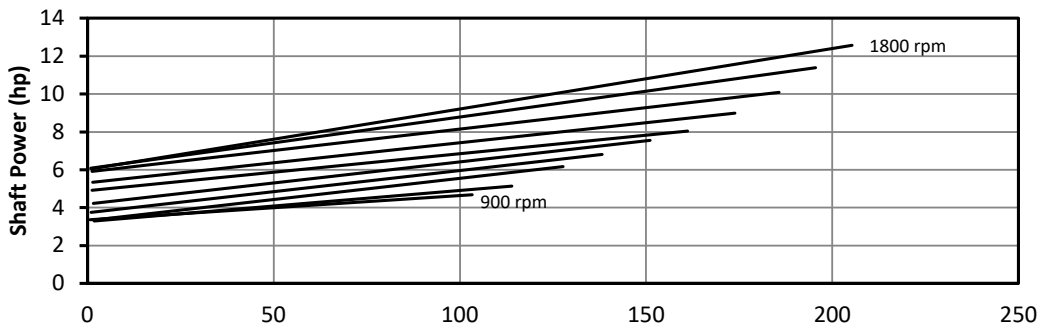
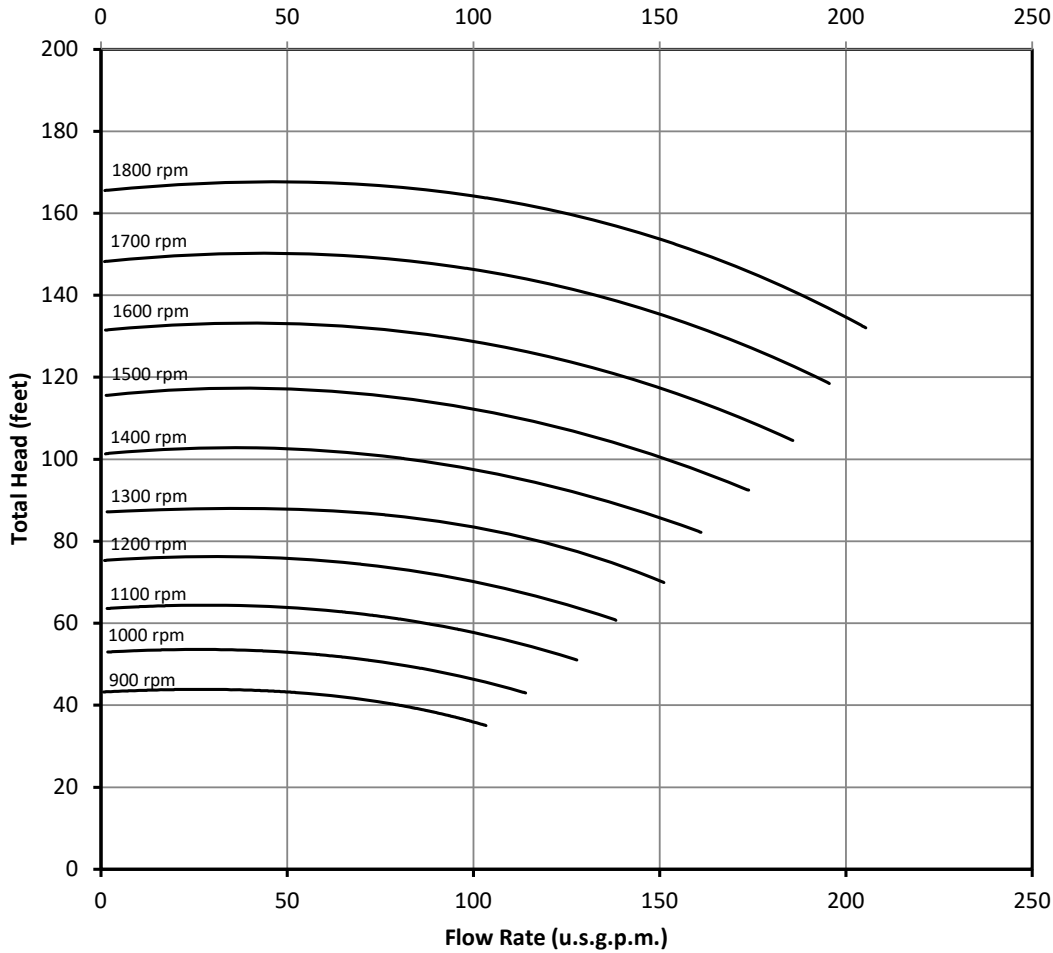




**Vertical (CLGT1.5) Series**  
Heavy Duty Cantilever Pump

**CERTIFIED PERFORMANCE**  
**MULTI-SPEED CURVE**

CURVE NUMBER	AGITATION SYSTEM	DISCHARGE	R.P.M.	CONSTRUCTION
CLGT1.5C25-4T4-12.3-SS SN5885	N/A	1.5"	Variable Speed	304L SS
PUMP TYPE	IMPELLER DIAMETER	SUCTION	LIQUID	MAX. SOLIDS
HPT/FPT Cantilever Pump	11.9"	3"	Water	3/8"

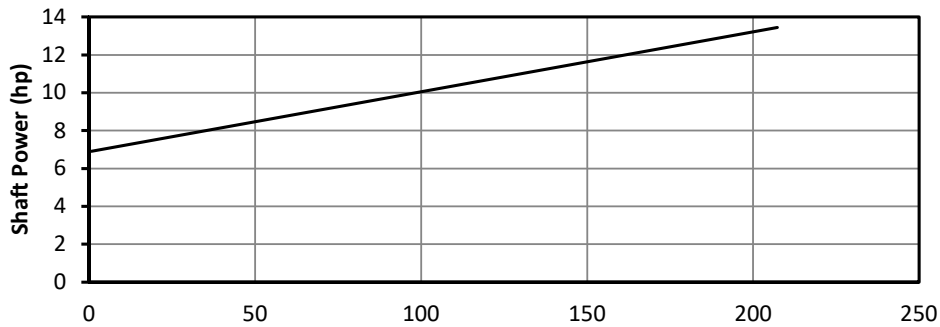
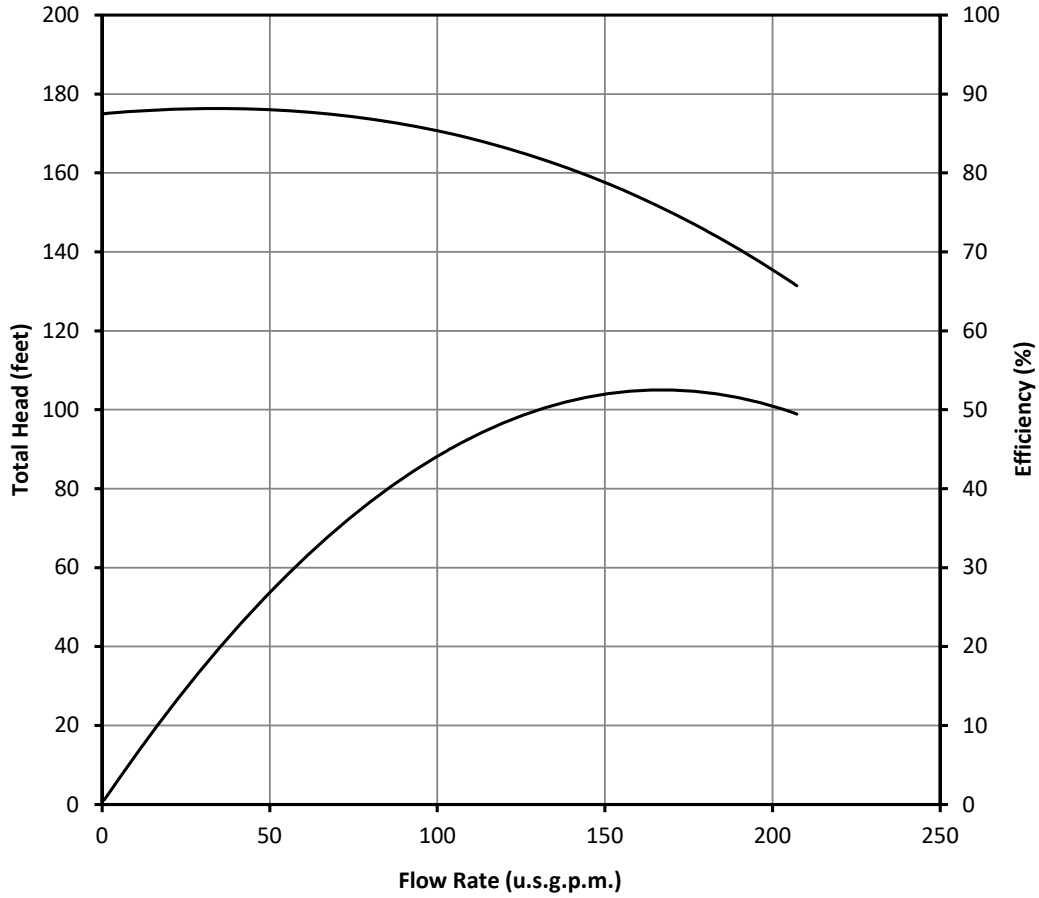




**Vertical (CLGT1.5) Series**  
Heavy Duty Cantilever Pump

**CERTIFIED PERFORMANCE**  
CURVE

CURVE NUMBER	AGITATION SYSTEM	DISCHARGE	R.P.M.	CONSTRUCTION
CLGT1.5C25-4T4-12.3-SS SN5886	N/A	1.5"	1800	304L SS
PUMP TYPE	IMPELLER DIAMETER	SUCTION	LIQUID	MAX. SOLIDS
HPT/FPT Cantilever Pump	12.1"	3"	Water	3/8"





**Vertical (CLGT1.5) Series**  
Heavy Duty Cantilever Pump

**CERTIFIED PERFORMANCE**  
**MULTI-SPEED CURVE**

CURVE NUMBER	AGITATION SYSTEM	DISCHARGE	R.P.M.	CONSTRUCTION
CLGT1.5C25-4T4-12.3-SS SN5886	N/A	1.5"	Variable Speed	304L SS
PUMP TYPE	IMPELLER DIAMETER	SUCTION	LIQUID	MAX. SOLIDS
HPT/FPT Cantilever Pump	12.1"	3"	Water	3/8"

