



Made Tough™ Success Story

Everlasting Pumps: GPM-Eliminator™ Pumps Perform Beyond Expectations

It was a rare situation. We were impressed. Our customers were *astounded*.

We had a GPM-Eliminator™ pump arrive at the GPM Service & Repair Center in Duluth, Minnesota, for manufacturer's service maintenance. It was an older model. It was so old that we had to dig deep into our archived records to piece together the pump's mysterious history.

We hadn't seen this pump since we originally sold it (and two others) to a taconite mining operation. We hadn't seen it for maintenance. It hadn't ever been tuned up. Still, somehow, it operated with no problems for **over twenty-five years**. Shockingly, the other two pumps from that original sale are still operating with no signs of slowing down.

We knew our GPM-Eliminator pumps were Made Tough, and in this case, that meant exceeding expectations many times over and performing admirably for more than two decades.

THE EVERLASTING GPM-ELIMINATOR—TOUGH ENOUGH FOR TACONITE MINING

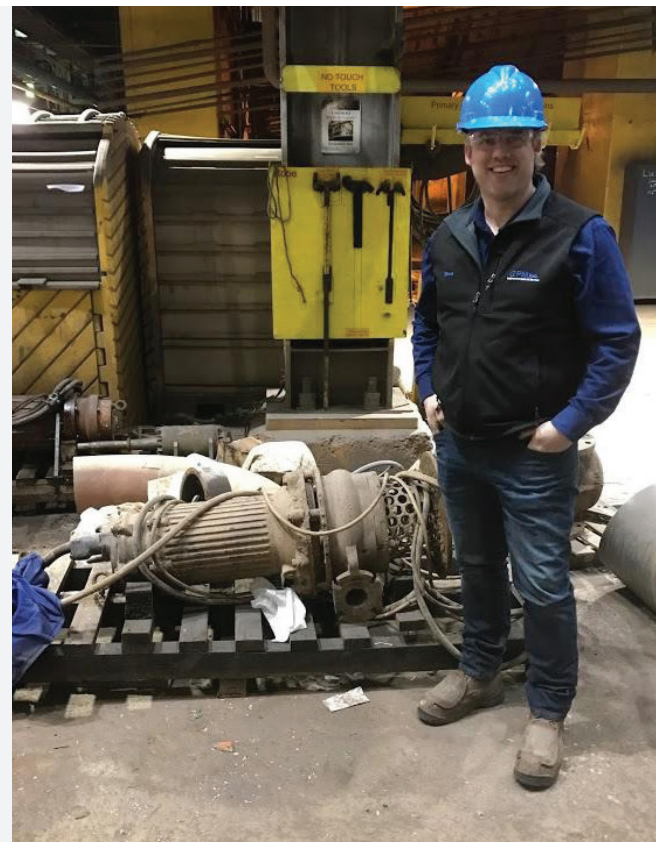
In 1991, GPM shipped three GPM-Eliminator pumps to a taconite mining plant in Northern Minnesota. They were destined for the thickener underflow application, where they'd pump silty water out of the customer's mining applications. Two pumps were installed in 1991, and the third was installed in 1993 to support increased demand.

That was the last we'd heard of those three pumps, until 2017.

After over 25 years of pumping silty water under the mine plant's thickener, one of the 15-horsepower pumps stopped working. Workers were shocked that the reliable pump was having trouble. They sent it to the GPM Service & Repair Center in Duluth, Minnesota, for manufacturer's service maintenance. That's when GPM's technicians noticed that the pump hadn't returned to the shop or been touched by a mechanic in a quarter century.

The GPM service team inspected the pump and determined it was built and shipped to the mine in 1991. It had been operating with an older-style motor that GPM phased out in 1998, when we started building motors in-house. Building motors in-house improved performance and allowed GPM to control manufacturing costs, engineer a more robust mechanical seal, and increase the L/D ratio and lead times on new units.

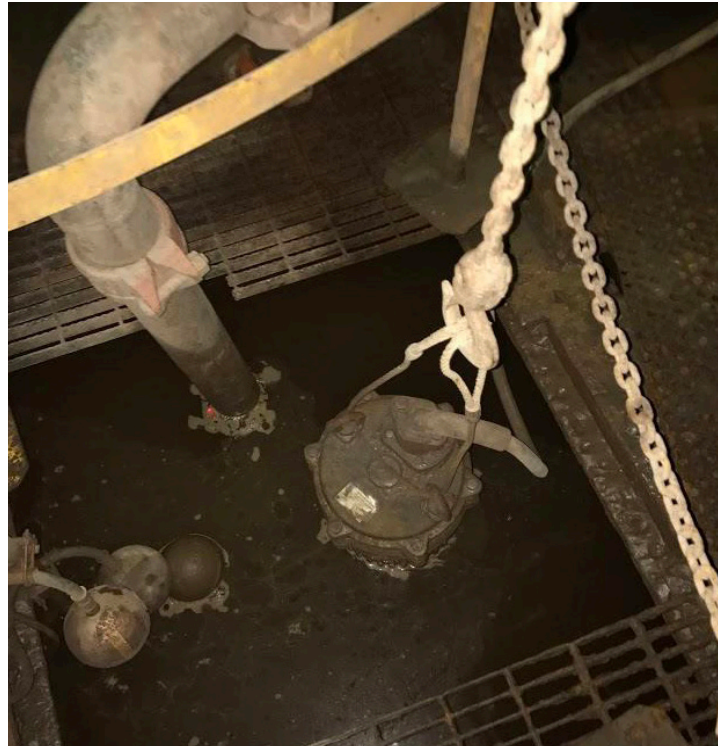
Compared to many other pumping applications, pumping silty water is relatively easy for a GPM-Eliminator. Even so, neither we nor the customer had ever heard of a pump working for 25+ years without service maintenance from the manufacturer.



GPM-Eliminator – Made Tough™



The customer was beyond satisfied with the pump's longstanding performance, and they were more than happy to upgrade to a modern, GPM-made motor before putting the pump back to work at the plant. We'll see them in a few years for a routine tune up. As for the other two pumps in operation for over 25 years, we'll see...



GPM-ELIMINATOR – MADE TOUGH™

It's not every day that GPM sees a twenty-five-year-old pump come into our Service & Repair Center for the first time, especially one needing only a quick replacement before returning to the field.

We considered rebranding the GPM-Eliminator to *The Everlasting GPM-Eliminator Pump*, but the name doesn't quite roll off the tongue as nicely.

Rest assured, no matter what you pump with your GPM-Eliminator, it too can be everlasting. Our pumps are Made Tough, but we don't expect every pump to last over two decades without some maintenance. In fact, we don't recommend it. Proper care and routine manufacturer's service maintenance are critical in extending the usable life of your investment.

"We'd never heard of a pump working for a quarter century without manufacturer's service maintenance. Impressive, but certainly not recommended!"