

RELIA **SOURCE**®



PRESSURE BOOSTER & WATER REUSE STATIONS

Providing Clean Water
Solutions For All Your
Municipal Water Supply
Pumping Needs.



The Pump People®



A History Of Solving Municipal Challenges

Gorman-Rupp has been revolutionizing the pumping industry since 1933. Many of the innovations introduced by Gorman-Rupp over the years have become industry standards.

Gorman-Rupp developed its first self-priming centrifugal pump to provide our customers with a durable, reliable pump that could perform in a demanding environment. Since then, we've worked closely with our customers around the world to meet their clean fluid transfer needs.

With over one million Gorman-Rupp pumps and pump stations installed to date, we have the experience to intimately understand

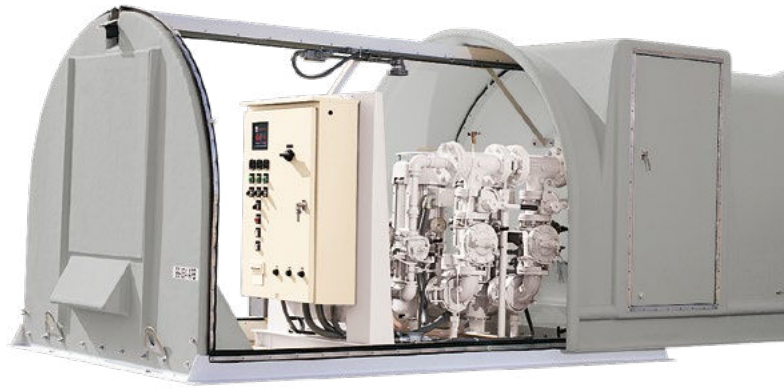
municipal pumping requirements. Our worldwide network of distributors has experienced industry professionals on staff, giving us firsthand knowledge of your most difficult applications.

We help you solve these challenges and make the most of your limited resources by designing our pumps and packaged systems to deliver decades of trouble-free unattended performance. When you

choose Gorman-Rupp for your municipal pumping applications, you'll experience some of the lowest life cycle costs in the industry and benefit from minimal service interruptions. And you'll enjoy one of the highest customer satisfaction ratings in the industry—guaranteed.

A History of Longevity

Gorman-Rupp ReliaSource® packaged water booster/reuse stations are designed for long lasting, trouble-free operation. All of our packaged stations come pretested and ready for immediate hookup to power and piping.



State-of-the-Art Equipment And Facilities

As the world's leading manufacturer of pumps and pumping systems, Gorman-Rupp offers you access to one of the largest and highest quality lines of municipal pumps available in the market place today.

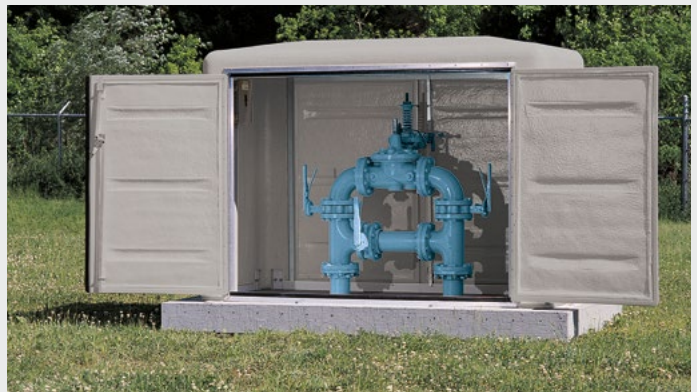
We maintain nearly one million square feet of the most modern manufacturing, testing and warehousing facilities in the world. Our experienced engineers take advantage of the latest technologies and innovations to custom-design, manufacture and assemble our products.

We perform rigorous testing based on Hydraulic Institute standards and test to

customers' actual operating conditions in our state-of-the-art testing facility guaranteeing innovative, superior-quality products that are ready to tackle your toughest jobs.

To ensure you get the right equipment for your requirements, Gorman-Rupp partners with a worldwide network of distribution and provides them with the best and most extensive training. Gorman-Rupp distributors will work hand-in-hand with you to recommend, customize and specify equipment. And they are always available should you ever require service assistance.

With just one number to call for parts and service, it's easy and convenient to keep your equipment performing as it should.



ReliaSource®

Reliable Pressure Booster Stations

Gorman-Rupp offers a full line of completely customizable ReliaSource® above-ground pressure booster stations for a variety of municipal applications, including boosting low line pressure and pressurizing grids, water tower filing, raw water transfer and non-potable water reuse.

Custom Engineering And Design

Gorman-Rupp's line of pressure booster and water reuse stations are fully customizable and eliminate costly service interruptions caused by inferior components. With Gorman-Rupp quality inside and out, ReliaSource packages outlast and outperform other pressure booster stations on the market, delivering the performance you can rely on. Guaranteed.

Specification

Our highly trained distribution team works hand-in-hand with both municipalities and consulting engineers to understand your water and reuse challenges and analyze your total system requirements. Our distributors can help recommend and specify the best ReliaSource® pressure booster station for the job.

Precisely Matched

Our experienced engineers custom design your ReliaSource pressure booster station to your specifications and needs. They precision match pumps, motors, controls, valves, pipes and accessories for maximum compatibility and performance.

Factory Built

Components of a ReliaSource pressure booster station are manufactured by Gorman-Rupp in our state-of-the-art facilities, taking advantage of the latest technologies and innovations. Each station is fully assembled in house by our experts.

Testing

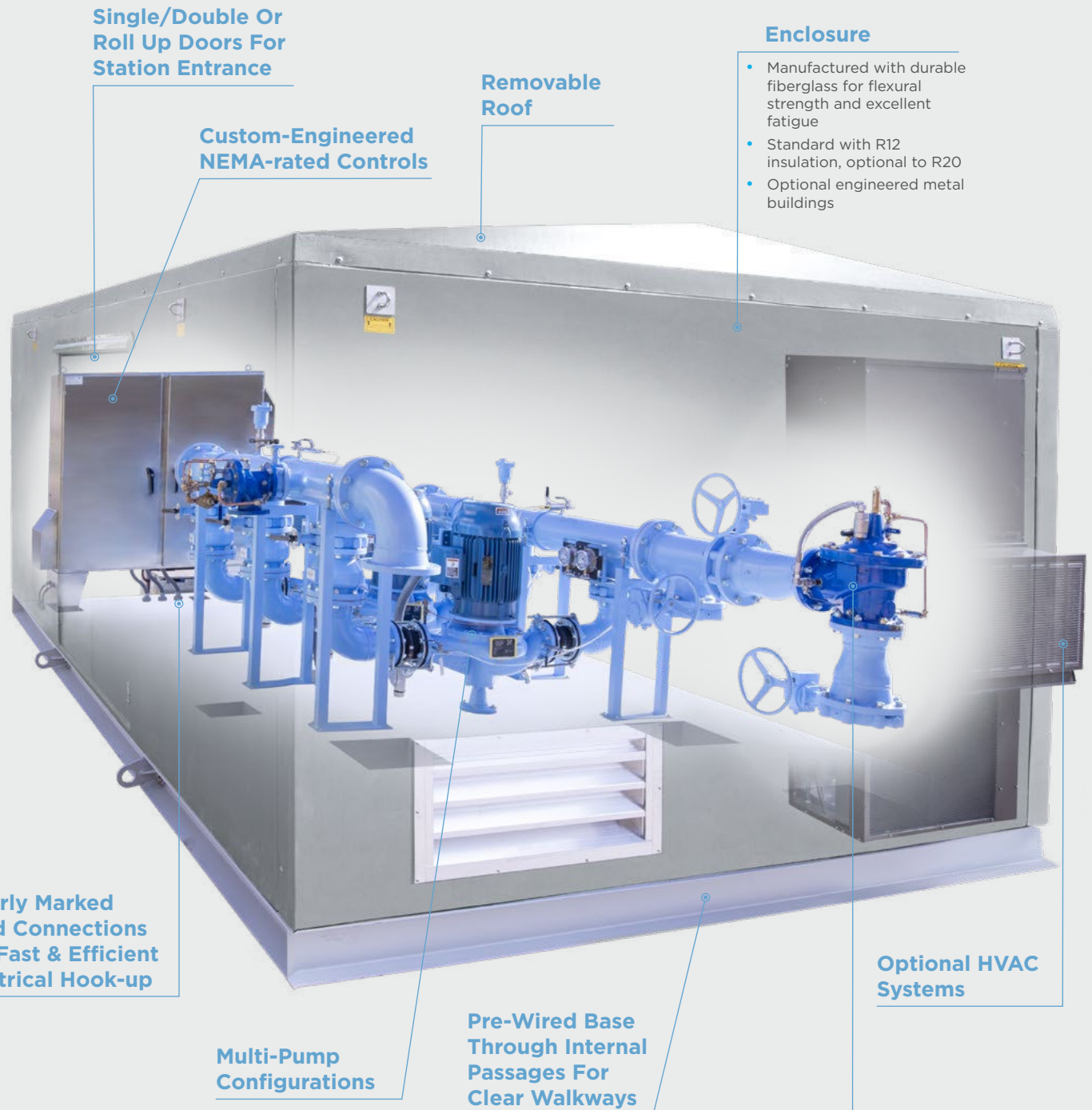
Every ReliaSource pressure booster station is rigorously tested using a wide range of testing options based on customer specifications and guided by Hydraulic Institute testing standards. By testing the complete unit under your unique operating requirements, we ensure your equipment performs exactly as it should.

Installation

Once complete, ReliaSource pressure booster stations are shipped from the factory, ready for professional installation. Just add power and connect piping for years of reliable lift station performance.



The Right Station For The Job



Single/Double Or
Roll Up Doors For
Station Entrance

Custom-Engineered
NEMA-rated Controls

Removable
Roof

Enclosure

- Manufactured with durable fiberglass for flexural strength and excellent fatigue
- Standard with R12 insulation, optional to R20
- Optional engineered metal buildings

Clearly Marked
Field Connections
For Fast & Efficient
Electrical Hook-up

Multi-Pump
Configurations

Pre-Wired Base
Through Internal
Passages For
Clear Walkways

Optional HVAC
Systems

Specifications

Pump Size: 1.25" (32 mm), 2" (50 mm),
3" (75 mm), 4" (100 mm), 6" (150 mm),
8" (200 mm), 10" (250 mm), 12" (300 mm)

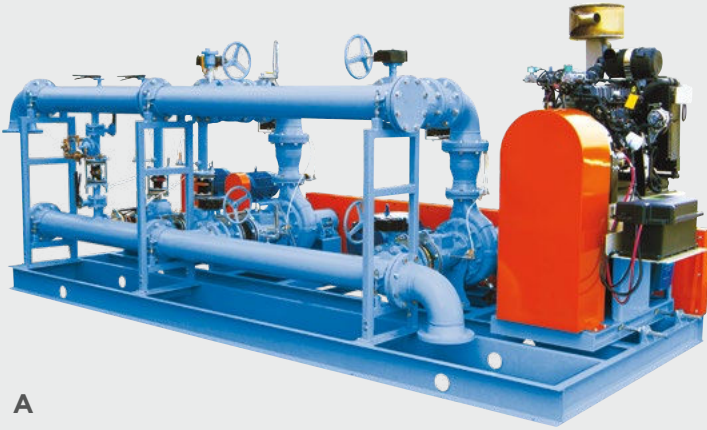
Max Capacity: 11000 GPM (694 lps)

Max Head: 530' (162 m)

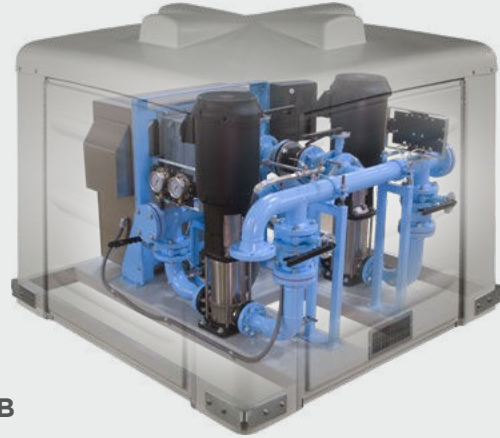
Motor - Voltage: 200 V 3P, 230 V 1P, 230 V 3P, 460 V 3P

Optional Pressure
Control Valves
For Managing
Complicated
Hydraulics

Gorman-Rupp ReliaSource® Water Booster And Reuse Stations: Built For Efficient, Reliable Pumping



A



B

A Auto-Start Booster Station

Pump Size: 2" (50 mm) and up
Accepts Self-Priming, End Suction, Horizontal Split Case

Base-mounted, auto-start pressure booster and water reuse stations use a pressure control which automatically converts to 12 V DC and drives the pump with a standby engine. These provide normal pumping service in the event of a power failure. They meet all standby requirements and are primarily fueled by LPG or natural gas.

The auto-start unit is a space-saving, modular combination of pump, electric motor and engine, all coupled to the same drive, eliminating the need for an expensive generator set.

Pressure booster auto-start units can be used to maintain constant grid pressure or for filling above-ground storage tanks.

B 6x6 Above-Ground Booster Station

Pump Size: 1.25" (32 mm) to 6" (150 mm)
Max Capacity: 750 GPM* (47 lps)
Motor Voltage: 200 V 3P, 230 V 1P,
230 V 3P, 460 V 3P

Accepts Self-Priming, Vertical Multi-Stage, Vertical In-Line, Close-Coupled End Suction

Outside the neat, low-silhouette fiberglass cover blends into the surroundings. The enclosure resists corrosion and provides protection from weather. Hinged and removable panels provide easy access to pumps and controls for maintenance and service. Its vandal-resistant design offers added security.

Each packaged system accommodates two pumps and motors sized to meet your requirements.



C

C Base-Mounted Booster Station

Pump Size: 1.25" (32 mm) and up
Max Capacity: 15000 GPM* (946 lps)
Motor Voltage: 200 V 3P, 230 V 1P, 230 V 3P, 460 V 3P
 Accepts Self-Priming, Vertical Multi-Stage, Vertical In-Line, Close-Coupled End Suction, Horizontal Split Case

Base-mounted pump stations have many standard designs for new installations or customized designs for an existing installation with minimal hookup time.

Stations are available with a variety of pump configurations to match the system requirements. For consistently heavy flows, additional pumps may be added. For high head/low flow applications, multi-staged designs are available.



D

D 7x10 Above-Ground Booster Station

Pump Size: 1.25" (32 mm) to 8" (200 mm)
Max Capacity: 1300 GPM* (82 lps)
Motor Voltage: 200 V 3P, 230 V 1P, 230 V 3P, 460 V 3P
 Accepts Self-Priming, Vertical Multi-Stage, Vertical In-Line, End Suction, Horizontal Split Case (up to 4")

The low-silhouette and color of the Quonset-type fiberglass enclosure blend in with the surrounding landscape. It is also resistant to corrosion, mildew, fungus and mold. The two-way sliding cover provides easy access to all equipment for maintenance and service. Vandal-resistant and padlockable door hardware is available for added security.

7x10 stations may include up to three pumps depending on horsepower.

Gorman-Rupp ReliaSource® Water Booster And Reuse Stations: Built For Efficient, Reliable Pumping



E



F

E Base-Mounted Station With Modular Enclosures

**Station Size: 8' (2 m) x 8' (2 m) to
24' (7 m) x 40' (12 m)**

Accepts Self-Priming, Vertical Multi-Stage, Vertical In-Line, Close-Coupled End Suction, Horizontal Split Case

Gorman-Rupp pre-engineered modular enclosures are convenient, affordable and durable. Enclosures can be expanded in increments of 2 feet to house a variety of equipment. Because they are pre-engineered, they avoid costs commonly associated with designing and engineering a custom station.

The enclosures are made from corrosion- and mildew-resistant fiberglass which is impervious to caustic or acidic atmosphere and is UV resistant. White gel coat covers the interior for easy maintenance and maximum reflection of light.

Strong and dependable, the enclosure can withstand winds up to 140 mph and has a snow load rating of 40 lbs. per square foot. R factors are 20+ (R10 is standard).

Lighting, heating and ventilation are installed, pre-wired and ready for immediate operation. Durable, 3-point stainless steel door lock is standard for added security. Enclosures are available in green, gray, tan or white (solid or pebble finish). Custom engineered steel buildings are available upon request.

F Valve Vaults

Valve vaults are compact, weather- and vandal-resistant, custom engineered systems delivered ready to perform a variety of valve functions. These above-ground units can house pressure reducing, surge control, altitude valves or flow meters.

Above-ground enclosures are made to resist corrosion, mildew, fungus and mold and have access doors on both sides to ease inspection and maintenance duties.

Precise Matching Of Pumps And Motors

The Gorman-Rupp team of electrical, mechanical and hydraulic engineers works closely throughout the development of each pumping system to ensure the entire pressure booster system works in harmony to meet your system requirements - accurately and reliably. Dependable station controls have a variety of adjustable pressure controls, H-O-A selectors for each pump, overload reset buttons and circuit breakers for station accessories. Automatic controls operate pump functions and warning systems. All field connections are clearly identified for fast and efficient electrical hookup.


Standard Features

- NEMA 1 stainless steel enclosure
- PLC based pressure control with built-in:
 - Lead pump/lag pump alternation
 - Pressure alarm/shut-down
 - Pump on/off delay timers
- Heavy-duty branch circuit breakers
- Various starter types include: FVNR, VFD and RVSS
- Motor protection on all phases
- Main entrance terminal block
- Panel corrosion inhibitor
- Voltage monitor
- Transformer
- Duplex GFI receptacle

- Suction and discharge pressure transducers
- Pump run indicators
- Elapsed time indicators
- Pump sequence selectors
- 120 volt control circuit w/breaker
- All internal wiring factory installed

Optional Features

- Push to test indicating lights
- Control panel heater
- Surge protection device
- Analog output surge protective device
- External source contacts
- Voltage alert indication



The performance of any pumping system is dependent on the reliability and accuracy of the pump controls. Our expert electrical engineers help you design an efficient system that includes the best, precisely matched controls in the industry.

Gorman-Rupp Pumps:

The Longest Lasting In The Business



A



B



C



D



E

Pumps For Every Situation

The pumps used in Gorman-Rupp packaged water booster/reuse stations are designed for long lasting, trouble-free operation. Simplicity, precision balancing and accurate machining ensure long, efficient life, reduced maintenance costs and minimum power consumption.

A Super U Series® High-Efficiency Self-Priming Centrifugal

Size: 3" (75 mm) to 6" (150 mm)
Max Capacity: 1500 GPM (95 lps)
Max Head: 207' (63 m)

B 80 Series® High-Efficiency Self-Priming Centrifugal

Size: 1.25" (32 mm) to 6" (150 mm)
Max Capacity: 1860 GPM (117 lps)
Max Head: 205' (63 m)

C VGH Series Standard Centrifugal

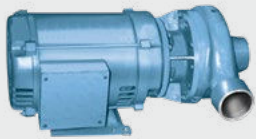
Size: 1.25" (32 mm) to 8" (200 mm)
Max Capacity: 4900 GPM (309 lps)
Max Head: 500' (152 m)

D 6400 Series™ End Suction Centrifugal

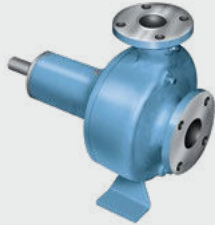
Size: 2" (50 mm) to 6" (150 mm)
Max Capacity: 2160 GPM (136 lps)
Max Head: 170' (52 m)

E 6500 Series® End Suction Centrifugal

Size: 3" (75 mm) to 16" (400 mm)
Max Capacity: 15600 GPM (984 lps)
Max Head: 540' (137 m)



F



G



H



I



J

F Close-Coupled End Suction Centrifugal*

Size: 1.25" (32 mm) to 6" (150 mm)
Max Capacity: 2800 GPM (177 lps)
Max Head: 205' (63 m)

G End Suction Centrifugal*

Size: 1.25" (32 mm) to 6" (150 mm)
Max Capacity: 2800 GPM (177 lps)
Max Head: 205' (63 m)

H Horizontal Split Case*

Size: 1.5" (38 mm) to 10" (250 mm)
Max Capacity: 15000 GPM (946 lps)
Max Head: 530' (162 m)

I Vertical In-Line Centrifugal*

Size: 1.25" (32 mm) to 12" (300 mm)
Max Capacity (Duplex): 14000 GPM (883 lps)
Max Head: 530' (162 m)

J Vertical Multi-Stage*

Size: 1.25" (32 mm) to 4" (100 mm)
Max Capacity (Duplex): 1200 GPM (76 lps)
Max Head: 570' (174 m)



*Pumps noted on this page only are NSF certified.



All packaged Gorman-Rupp above-ground pressure booster and water reuse stations are shipped ready for immediate installation and hookup to power and piping.

After Sale Support

Gorman-Rupp products stand the test of time due to our quality manufacturing processes, rigorous product testing and extensive after sale support.

Product Support

Every pump manufactured by Gorman-Rupp is supported with reference information. Pump operation and maintenance manuals (including parts lists), specification data sheets, performance curves and outline drawings in PDF and CAD formats are available on our website or through your distributor for every pump.

Warranty

The warranties on Gorman-Rupp products are some of the best in the industry. Gorman-Rupp has you covered with warranties up to 60 months.

Education & Safety

Gorman-Rupp is committed to remaining at the forefront of the industry with technology and safety. Training videos, demos and in-person training sessions created for our distributors and end-

users help to keep everyone up to date on the latest safety tips and pump maintenance.

Parts

When you need a replacement part, you'll have it fast. Gorman-Rupp is fully committed to keeping your equipment running long after installation and ensuring your pump or lift station continues to meet your requirements year after year. We sell parts through our network of distributors. Find a distributor in your area for assistance.

Service

Should your pump or pressure booster station require service, our worldwide network of factory-trained distributors are ready to quickly respond. Our distributors have the expertise to support you and your pump or pressure booster station long after installation.

Manufacturing Facilities

Gorman-Rupp USA
Mansfield, Ohio, USA

Gorman-Rupp Canada
St. Thomas, Ontario, Canada

Gorman-Rupp Europe
Waardenburg, Netherlands
Namur, Belgium

Gorman-Rupp Africa
Cape Town, South Africa
Durban, South Africa
Johannesburg, South Africa (Headquarters)

Distribution Center

Grand Prairie, Texas, USA

Engineering and manufacturing superiority has been the hallmark of Gorman-Rupp since our inception in 1933. Today we bring our products to life in some of the most efficient, modern and state-of-the-art manufacturing facilities in the world. Gorman-Rupp has a selection of nearly 3,000 pump models, and our world-class team of distributors has worked closely with thousands of end users around the world. We have the proven expertise and the resources to specify, manufacture, test and service your pump, and to ensure reliable performance for the long haul.

GRPUMPS.COM

GORMAN-RUPP PUMPS
P.O. BOX 1217
MANSFIELD, OHIO 44901-1217 | USA
TEL: 419.755.1011 | FAX: 419.755.1251



The Pump People®