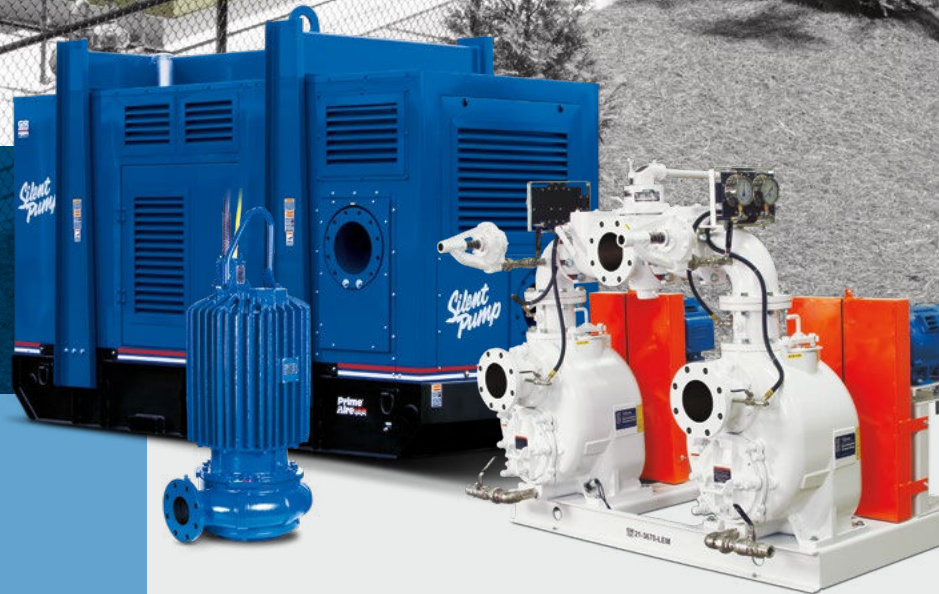




PUMPS FOR MUNICIPAL APPLICATIONS

From Clean Water To Wastewater, Here To Serve Your Pumping Needs



The Pump People®



A History Of Solving Municipal Challenges

Gorman-Rupp has been revolutionizing the pumping industry since 1933. Many of the innovations introduced by Gorman-Rupp over the years have become industry standards.

Gorman-Rupp developed its first self-priming centrifugal pump to provide our customers with a durable, reliable pump that could perform in a demanding environment. Since then, we've worked closely with our customers around the world to meet their solids-handling and clean fluid transfer needs.

With over one million Gorman-Rupp pumps and pump stations installed to date, we have the experience to intimately understand water and wastewater pumping requirements. Our worldwide network of distributors has experienced industry professionals on staff, giving us firsthand knowledge of your most difficult applications.

We help you solve these challenges and make the most of your limited resources by designing our pumps, lift stations and booster/reuse stations to deliver decades of trouble-free unattended performance. When you choose Gorman-Rupp for your municipal pumping applications, you'll experience some of the lowest life cycle costs in the industry and benefit from minimal service interruptions. And you'll enjoy one of the highest customer satisfaction ratings in the industry—guaranteed.



A History of Innovation

Gorman-Rupp has been manufacturing dependable lift stations for over 55 years. All our lift stations come pretested and ready for immediate hookup to power and piping.

State-of-the-Art Equipment And Facilities

As the world's leading manufacturer of pumps and pumping systems, Gorman-Rupp offers you access to one of the largest and highest quality lines of municipal pumps, engine-driven pumps, lift stations and water booster/reuse stations.

We maintain nearly one million square feet of the most modern manufacturing, testing and warehousing facilities in the world. Our experienced engineers take advantage of the latest technologies and innovations to custom-design, manufacture and assemble our products.

We perform rigorous testing based on

Hydraulic Institute standards and test to customers' actual operating conditions in our state-of-the-art testing facility guaranteeing innovative, superior-quality products that are ready to tackle your toughest jobs.

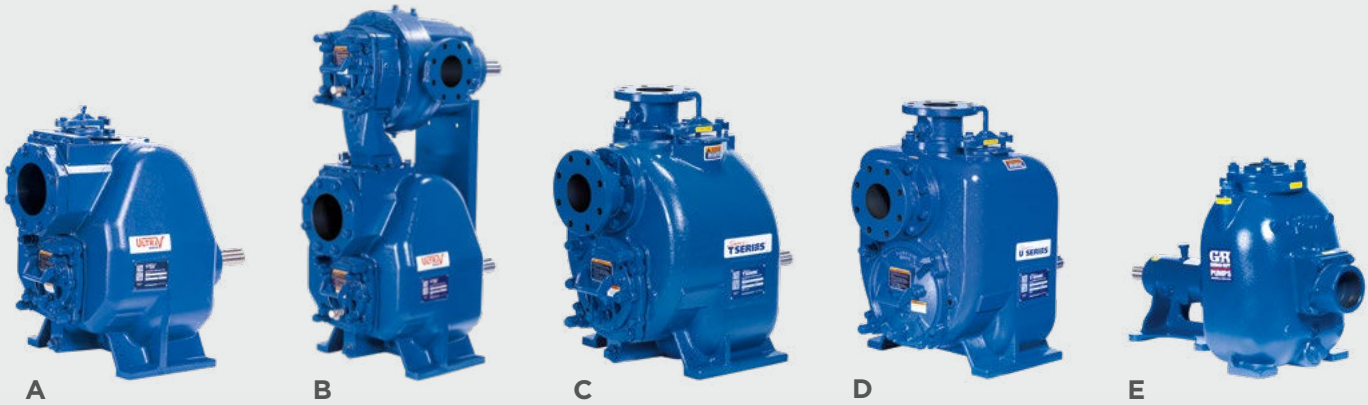
To ensure you get the right equipment for your requirements, Gorman-Rupp partners with a worldwide network of distribution and provides them with the best and most extensive training. Gorman-Rupp distributors will work hand-in-hand with you to recommend, customize and specify equipment. And they are always available should you ever require service assistance.

With just one number to call for parts and service, it's easy and convenient to keep your equipment performing as it should.



Gorman-Rupp Pumps:

The Longest Lasting In The Business



Pumps For Every Situation

Gorman-Rupp self-priming, self-priming centrifugal, submersible, standard and horizontal end suction centrifugal pumps offer maximum dependability and ease of service. Our self-priming pumps can be mounted high and dry at floor level, with only the suction line down in the liquid. The submersibles are designed for efficient operation, while remaining out-of-sight, beneath the fluid's surface. Gorman-Rupp offers several high volume, high pressure centrifugal pumps with few moving parts, making maintenance and service minimal. Pumps are available as basic units for connection to your power source or as part of a complete ReliaSource® pump package.

A Ultra V Series® Solids-Handling Self-Priming Centrifugal

Size: 3" (75 mm) to 6" (150 mm)
Max Capacity: 1904 GPM (120 lps)
Max Head: 168' (51 m)
Max Solids: 3" (76 mm)

B Ultra V Series® with UltraMate® Solids-Handling Self-Priming Centrifugal

Size: 3" (75 mm) to 6" (150 mm)
Max Capacity: 1904 GPM (120 lps)
Max Head: 325' (99 m)
Max Solids: 3" (76 mm)

C Super T Series® Solids-Handling Self-Priming Centrifugal

Size: 2" (50 mm) to 10" (250 mm)
Max Capacity: 3400 GPM (215 lps)
Max Head: 168' (51 m)
Max Solids: 3" (76 mm)

D Super U Series® High-Efficiency Self-Priming Centrifugal

Size: 3" (75 mm) to 6" (150 mm)
Max Capacity: 1500 GPM (95 lps)
Max Head: 207' (63 m)
Max Solids: 1.25" (32 mm)

E 80 Series® High-Efficiency Self-Priming Centrifugal

Size: 1.25" (32 mm) to 6" (150 mm)
Max Capacity: 1860 GPM (117 lps)
Max Head: 205' (63 m)
Max Solids: 1.9" (49 mm)



F **10 Series®**
Solids-Handling Self-Priming Centrifugal

Size: 1.5" (38 mm) to 12" (300 mm)
 Max Capacity: 6700 GPM (423 lps)
 Max Head: 130' (40 m)
 Max Solids: 3" (76 mm)

G **SF Series®**
Submersible

Size: 3" (75 mm) to 8" (200 mm)
 Max Capacity: 3400 GPM (215 lps)
 Max Head: 172' (52 m)
 Max Solids: 3" (76 mm)
 Horsepower: 3 HP (2 kW) to 75 HP (56 kW)

H **VG Series & VGH Series**
Standard Centrifugal

Size: 1.25" (30 mm) to 8" (200 mm)
 Max Capacity: 4900 GPM (309 lps)
 Max Head: 500' (152 m)
 Max Solids: 1.38" (35 mm)

I **6500 Series®**
Horizontal End Suction Centrifugal

Size: 3" (75 mm) to 16" (400 mm)
 Max Capacity: 15600 GPM (984 lps)
 Max Head: 540' (137 m)
 Max Solids: 4" (102 mm)

When paired with a variety of Gorman-Rupp pumps and pump packages, the Ech₂oStorm® venturi aeration system adds dissolved oxygen into a variety of municipal liquids.



ReliaSource® – The Municipal Market's Most Reliable Packaged Stations

Gorman-Rupp has been manufacturing quality lift systems for over 55 years. Our full line of complete above-ground stations is 100% custom engineered and manufactured by Gorman-Rupp. All our packages offer an extensive line of pumps, motors, controls, valves and accessories and are housed in durable fiberglass enclosures. Each station comes pretested and ready for immediate hookup to power and piping.



A



B



C

A Modular Above-Ground Packaged Station

Pump Size: 2" (50 mm) to 12" (300 mm)
Max Capacity: 5200 GPM* (328 lps)
Max Head: 325' (99 m)
Max Solids: 3" (76 mm)
Station Size: 10' (3 m) x 14' (4 m) to
11'6" (4 m) x 20' (6 m)

C 6x6T Above-Ground Packaged Station

Pump Size: 2" (50 mm) to 6" (150 mm)
Max Capacity: 1480 GPM* (94 lps)
Max Head: 158' (48 m)
Max Solids: 3" (76 mm)

B 8x12 Above-Ground Packaged Station

Pump Size: 2" (50 mm) to 8" (200 mm)
Max Capacity: 2660 GPM (168 lps)
Max Head: 320' (98 m)
Max Solids: 3" (76 mm)





D



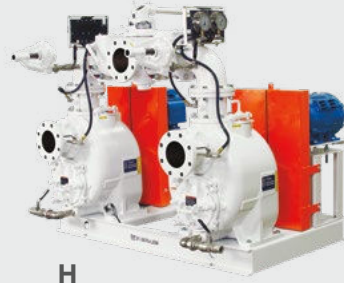
E



F



G



H

D 6x6 Above-Ground Packaged Station

Pump Size: 2" (50 mm) to 6" (150 mm)
 Max Capacity: 1480 GPM* (94 lps)
 Max Head: 158' (48 m)
 Max Solids: 3" (76 mm)

E Above-Ground Submersible Valve Package (ASVP)

Pump Size: 3" (75 mm) to 6" (150 mm)
 Max Capacity: 2280 GPM* (144 lps)
 Max Head: 172' (52 m)
 Max Solids: 3" (76 mm)
 Horsepower: 3 HP (2 kW) to 50 HP (37 kW)

F 7x10 Above-Ground Packaged Station

Pump Size: 2" (50 mm) to 8" (200 mm)
 Max Capacity: 2660 GPM* (168 lps)
 Max Head: 158' (48 m)
 Max Solids: 3" (76 mm)

G Auto-Start Packaged Station

Pump Size: 2" (50 mm) to 10" (250 mm)
 Max Capacity: 3400 GPM* (215 lps)
 Max Head: 320' (98 m)
 Max Solids: 3" (76 mm)

H Base-Mounted Packaged Station

Pump Size: 2" (50 mm) to 10" (250 mm)
 Max Capacity: 3400 GPM* (215 lps)
 Max Head: 320' (98 m)
 Max Solids: 3" (76 mm)

*Single pump operation

Backup And Bypass Pump Configurations

Gorman-Rupp can configure a fully operational backup and bypass pumping system to best suit your needs. Typical options include:

ReliaPrime® Backup System

- Comes complete with all components including:
 - Discharge check valve
 - Air release valve
 - Suction and discharge gauges
 - Cold weather package (if required)
- Energy-efficient natural gas engine and auto-start control to start and stop pump in response to liquid level
- Lightweight, corrosion-resistant aluminum enclosure maintains noise levels at 72 dBA or lower at full load

Portable Trailer-Mounted Backup

- Lowest cost option
- Can be easily transported for use at multiple locations

Portable Trailer Or Base-Mounted Stored at Lift Station

- Quick disconnect suction and discharge fittings
- Can be used occasionally for other pumping needs

Base-Mounted Permanent Backup

- Permanently installed
- Independent suction and discharge header
- LP and natural gas engine



Gorman-Rupp Engine-Driven Backup And Bypass Pumps: Designed For Trouble-Free Operation

Designed to deliver all the benefits of our sound-attenuated silent pumps, the ReliaPrime® emergency bypass station operates on natural gas, making it another quiet, efficient and environmentally friendly addition to our family of industry leading engine-driven pumps.



ReliaPrime® Super T Series®

Pump Size: 6" (150 mm)
Max Capacity: 1600 GPM (101 lps)
Max Head: 140' (43 m)
Max Solids: 3" (75 mm)
Engine: General Motors



ReliaPrime® Ultra V Series®

Pump Size: 3" (75 mm)
Max Capacity: 770 GPM (49 lps)
Max Head: 93' (28 m)
Max Solids: 3" (75 mm)
Engine: Zenith



ReliaPrime® Prime Aire®

Pump Size: 3" (75 mm)
Max Capacity: 440 GPM (28 lps)
Max Head: 118' (36 m)
Max Solids: 3" (75 mm)
Engine: Zenith



ReliaPrime® Prime Aire®

Pump Size: 4" (100 mm)
Max Capacity: 630 GPM (40 lps)
Max Head: 96' (29 m)
Max Solids: 3" (75 mm)
Engine: Zenith

Gorman-Rupp Engine-Driven Backup, Bypass And Sludge Transfer Pumps: Reliable And Easy To Maintain



A



B



C

Backup, Bypass And Sludge Transfer Pumps

Gorman-Rupp's line of engine driven backup, bypass and sludge transfer pumps provide a reliable alternative to traditional emergency generators. They are designed to function in many situations where generators are ineffective and provide the best possible protections against sanitary sewer overflows.

A Super T Series® Engine Driven

Size: 4" (100 mm) to 6" (150 mm)
Max Capacity: 1640 GPM (104 lps)
Max Head: 138' (42 m)
Max Solids: 3" (76 mm)

C Prime Aire Plus® Engine Driven

Size: 3" (75 mm) to 16" (400 mm)
Max Capacity: 15600 GPM (984 lps)
Max Head: 540' (165 m)
Max Solids: 4" (102 mm)

B Super T Series® Silent Pump

Size: 4" (100 mm) to 6" (150 mm)
Max Capacity: 1640 GPM (104 lps)
Max Head: 136' (42 m)
Max Solids: 3" (76 mm)



Engine-driven models are available with high-speed wheel kit or DOT-approved trailer with brakes and lighting kit.



D



E



F

D Prime Aire®
Engine Driven

Size: 3" (75 mm) to 14" (350 mm)
Max Capacity: 9900 GPM (625 lps)
Max Head: 420' (128 m)
Max Solids: 3.5" (89 mm)

F SludgeKat®
Hydraulic Driven

Size: 4" (100 mm)
Max Capacity: 226 GPM (14 lps)
Max Head: 390' (119 m)
Max Solids: 2.4" (61 mm)

E Prime Aire®
Silent Pump

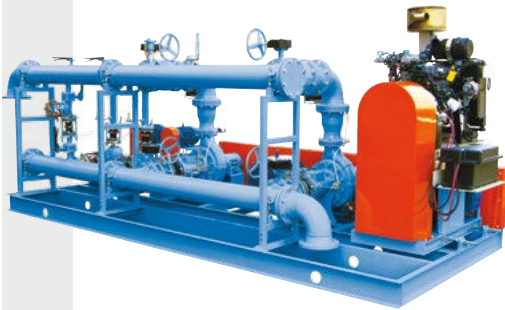
Size: 4" (100 mm) to 14" (350 mm)
Max Capacity: 9900 GPM (625 lps)
Max Head: 195' (59 m)
Max Solids: 3.5" (89 mm)



Gorman-Rupp Water Booster And Reuse Stations:

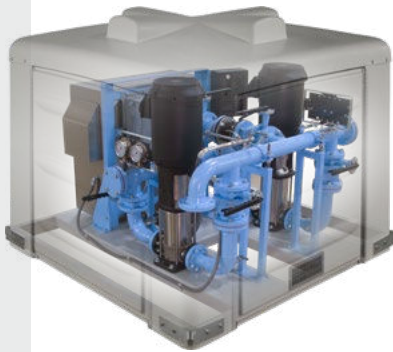
Built For Efficient, Reliable Pumping

Gorman-Rupp offers a full line of completely customizable above-ground pressure booster stations for a variety of municipal applications, including boosting low line pressure and pressurizing grids, water tower filing, raw water transfer and non-portable water reuse.



Auto-Start Booster Station

Pump Size: 2" (50 mm) and up
Accepts Self-Priming, End Suction, Horizontal Split Case



6x6 Above-Ground Booster Station

Pump Size: 1.25" (32 mm) to 6" (150 mm)
Max Capacity: 750 GPM* (47 lps)
Accepts Self-Priming, Vertical Multi-Stage, Vertical In-Line, End Suction



All Gorman-Rupp above-ground pressure booster and water reuse stations are shipped ready for immediate installation and hookup to power and piping.



Base-Mounted Booster Station

Pump Size: 1.25" (32 mm) and up
Max Capacity: 15000 GPM* (442 lps)
Accepts Self-Priming, Vertical Multi-Stage, Vertical In-Line, End Suction, Horizontal Split Case



7x10 Above-Ground Booster Station

Pump Size: 1.25" (32 mm) to 8" (200 mm)
Max Capacity: 1300 GPM* (82 lps)
Accepts Self-Priming, Vertical Multi-Stage, Vertical In-Line, End Suction, Horizontal Split Case (up to 4")



Modular Enclosures

Station Size: 8' (2 m) x 8' (2 m) to
24' (7 m) x 40' (12 m)
Accepts Self-Priming, Vertical Multi-Stage, Vertical In-Line, End Suction, Horizontal Split Case



Valve Vaults

Stations: Above-Ground Units
Flow meter and valve sizes up to 16". Other custom engineered options available.

Precise Matching Of Pumps And Motors With Integrinex® Controls

The Gorman-Rupp team of electrical, mechanical and hydraulic engineers works closely throughout the development of each pumping system to ensure the entire lift system works in harmony to meet your system requirements – accurately and reliably.

Integrinex® Liquid Level Controls

Integrinex® Standard

Integrinex Standard is the heart of every Gorman-Rupp station packed with the features you need most, including duplex and triplex alternation, level sensors, pump delay and alarms.

Integrinex® Advanced

Advanced control systems include Soft Starters and VFD's (variable frequency drives) to manage electric inrush, hydraulic shock and matching starting and stopping torque required by the pump. Integrinex Advanced controls are custom engineered to match your unique system requirements for the additional control you need. And now, when equipped with new FloSmart® technology, the Integrinex Advanced control system can detect a pump obstruction and run a cleaning cycle until the debris is cleared.

Integrinex® Remote View

All the functionality of our advanced system with the added convenience of remote tablet-based management and monitoring.

INTEGRINEX®
ADVANCED
WITH FloSmart
TECHNOLOGY
Integrinex® Advanced with
FloSmart® technology
is available in new
ReliaSource® stations.



The performance of any pumping system is dependent on the reliability and accuracy of the pump controls. Our expert electrical engineers help you design an efficient system that includes the best, precisely matched controls in the industry.



Pumps For A Variety Of Applications

Gorman-Rupp pumps can be configured to suit your situation. Out in the waste sumps, in the heat, steam and grime, handling the sludge other pumps cannot. Performing reliably month after month, year after year, in all types of systems, pumping solids and debris that would shut other operations down.

Wastewater And Sewage Handling

- Belt Filter Press Feed Pumps
- Centrifuge Feed Pumps
- Digester Recirculation Pumps
- Effluent Pumps
- Equalization Pumps
- Filter Feed Pumps
- Grit Pumps
- Influent Pumps
- Portable Engine-Driven Pumps
- RAS Pumps
- WAS Pumps
- Sludge Transfer Pumps
- Submersible Scum Pumps
- Supernatant Recirculation Pumps
- Utility Non-Potable Water Pumps



Water Systems

- Low Line Pressure Boosting
- Irrigation
- Non-potable Water Reuse
- Pressurizing Grids
- Raw Water Transfer
- Water Tower Filling

Emergency Backup And Bypass

Gorman-Rupp Is A Proud Member Of:



After Sale Support

Gorman-Rupp products stand the test of time due to our quality manufacturing processes, rigorous product testing and extensive after sale support.

Product Support

Every pump manufactured by Gorman-Rupp is supported with reference information. Pump operation and maintenance manuals (including parts lists), specification data sheets, performance curves and outline drawings in PDF and CAD formats are available on our website or through your distributor for every pump.

Warranty

The warranties on Gorman-Rupp products are some of the best in the industry. Gorman-Rupp has you covered with warranties up to 60 months.

Education & Safety

Gorman-Rupp is committed to remaining at the forefront of the industry with technology and safety. Training videos, demos and

in-person training sessions created for our distributors and end-users help to keep everyone up to date on the latest safety tips and pump maintenance.

Parts

When you need a replacement part, you'll have it fast. Gorman-Rupp is fully committed to keeping your equipment running long after installation and ensuring your pump or lift station continues to meet your requirements year after year. We sell parts through our network of distributors. Find a distributor in your area for assistance.

Service

Should your pump or lift station require service, our worldwide network of factory-trained distributors are ready to quickly respond. Our distributors have the expertise to support you and your pump or lift station long after installation.

Manufacturing Facilities

Gorman-Rupp USA
Mansfield, Ohio, USA

Gorman-Rupp Canada
St. Thomas, Ontario, Canada

Gorman-Rupp Europe
Waardenburg, Netherlands
Namur, Belgium

Gorman-Rupp Africa
Cape Town, South Africa
Durban, South Africa
Johannesburg, South Africa (Headquarters)

Distribution Center

Grand Prairie, Texas, USA

Engineering and manufacturing superiority has been the hallmark of Gorman-Rupp since our inception in 1933. Today we bring our products to life in some of the most efficient, modern and state-of-the-art manufacturing facilities in the world. Gorman-Rupp has a selection of nearly 3,000 pump models, and our world-class team of distributors has worked closely with thousands of end users around the world. We have the proven expertise and the resources to specify, manufacture, test and service your pump, and to ensure reliable performance for the long haul.

GRPUMPS.COM

GORMAN-RUPP PUMPS
P.O. BOX 1217
MANSFIELD, OHIO 44901-1217 | USA
TEL: 419.755.1011 | FAX: 419.755.1251



The Pump People®